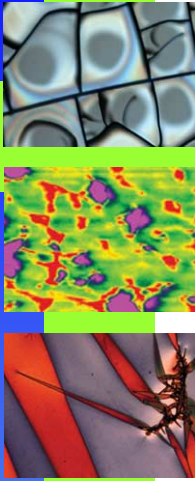




## Hydrophilic Coating

EPI can coat the surfaces of tracks, channels, chambers, tubes, and other features with a submicron thick hydrophilic coating that will:

- Prevent gas bubble adherence and coalescence.
- Make channels and flow paths more “slippery.”
- Protect surfaces from protein absorption and penetration.
- Reduce microbial adhesion.
- Improve wettability, wicking, and capillary action.
- Improve flow, liquid, and blood handling characteristics.
- Cause spontaneous wetting and improved flow on membranes.
- Improve surface printability.



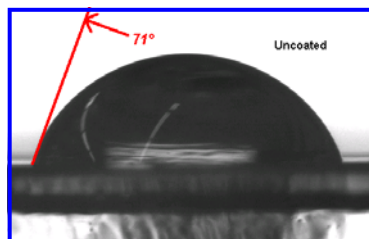
The inside of the .060" I.D. polyethylene tube on the right has a hydrophilic coating.

Note the substantially improved capillary action versus the uncoated tube on the left.

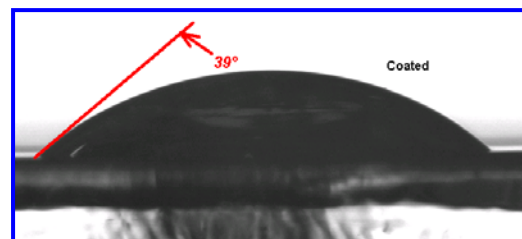
EPI's engineering group will review your unique application to determine the best use of our hydrophilic coating. Please contact your local Technical Sales Representative or inside Account Manager.

**World Headquarters**  
Eastern Plastics, Inc.  
110 Halcyon Drive  
Bristol, Connecticut  
06010-9188  
U.S.A.  
Tel: (860) 314-2880  
Fax: (860) 314-2888  
www.easternplastics.com  
sales@easternplastics.com

### Wettability Demonstration



DI water droplet on uncoated polycarbonate, 71° contact angle.



DI water droplet on hydrophilic coated polycarbonate, 39° contact angle.